

38 784 SH0 **SKATE COSMOPOLITAN WALL PLATE**

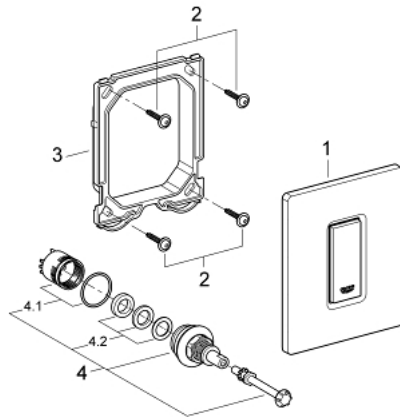


PRODUCT DESCRIPTION

- Colour: alpine white
- manual activation for urinal
- set for final installation
- for Rapido U or Rapido UMB
- 116 x 144 mm
- mechanical functional cartridge
- flow pressure min 0.5 bar
- operating pressure max 6 bar
- 1.0 - 6.0 l adjustable
- low noise (group II according to German noise specification)



38 784 SH0 **SKATE COSMOPOLITAN WALL PLATE**



SPARE PARTS, March 2012 – spareParts.validDate.now

1: top plate w. push button (Order-nr. 42377SH0)

2: Screw dia. 4x52 mm (Order-nr. 6636200M)

3: Frame (Order-nr. 66845000)

4: Cartridge (Order-nr. 42354000)

4.1: Repl. kit f. seal (Order-nr. 4271500M)

4.2: Rings (Order-nr. 4282000M)