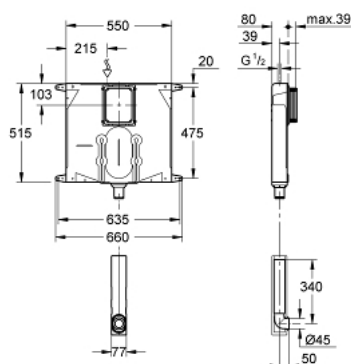


## 38 863 000 FLUSHING CISTERN FOR WC 80 MM

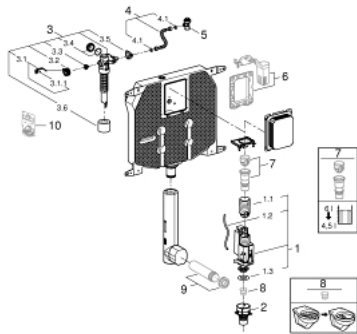


### PRODUCT DESCRIPTION

- 6 - 9 l adjustable
- pneumatic discharge valve offering 3 modes of operation: dual flush or start/stop or single flush
- water supply connection from top
- low noise (group I acc. to German Noise Specification)
- with push fit flexible hose union
- angle valve ½"
- shortable inspection shaft incl. protection during construction phase, for vertical use
- fixing brackets
- without wall plate/actuation
- GROHE Water Saving - Less water, perfect flow
- for mounting of small flush plates please order revision shaft 40 949 000 (sold separately)



## 38 863 000 FLUSHING CISTERN FOR WC 80 MM



### SPARE PARTS, May 2021 – spareParts.validDate.now

- 1: Dual Flush discharge valve AV1 (Order-nr. 42320000)
- 1.1: Extension for overflow pipe (Order-nr. 42313000)
- 1.2: pneumatic hose (Order-nr. 42319000)
- 1.3: Ball seal dia. 9x6.8 mm (Order-nr. 42310000)
- 2: Valve seat for GD2 (Order-nr. 42315000)
- 3: Filling valve (Order-nr. 43991000)
- 3.1: Valve Support (Order-nr. 43995000)
- 3.2: Lever (Order-nr. 43734000)
- 3.2.1: Ball seal dia. 9x6.8 mm (Order-nr. 4377000M)
- 3.3: Valve head (Order-nr. 43536000)
- 3.4: Membrane (Order-nr. 4375800M)
- 3.5: Screw cap (Order-nr. 43735000)
- 3.6: Valve float, 5 pcs. (Order-nr. 4379100M)
- 4: Tube (Order-nr. 42233000)
- 4.1: Seat washer (Order-nr. 0319100M)
- 5: Service valve (Order-nr. 42343000)
- 6: Retro-fit set (Order-nr. 38796000)\*
- 7: 4,5 l Adapter for GD2 (Order-nr. 42333000)\*
- 8: Flow restrictor (Order-nr. 42300000)\*
- 9: WC inlet and outlet connecting set (Order-nr. 37311K00)\*
- 10: Repl. kit f. seal (Order-nr. 43722000)\*

\* Optional accessories