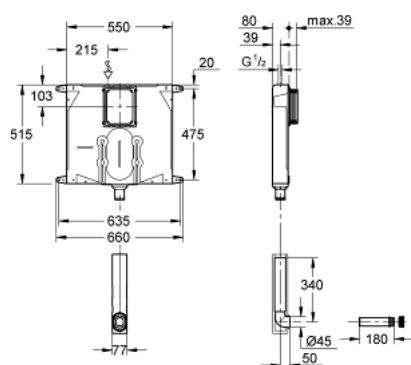


## 38 986 000 FLUSHING CISTERN GD 2

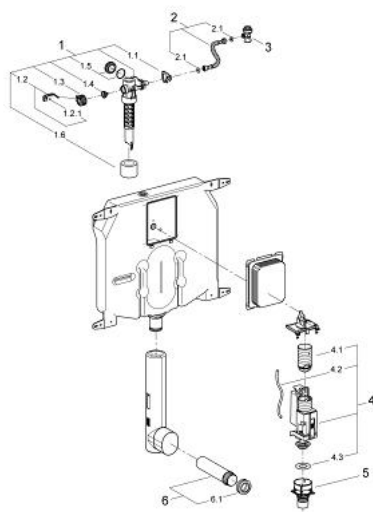


### PRODUCT DESCRIPTION

- 6 - 9 l adjustable
- adjustment ex factory 6 l and 3 l
- pneumatic discharge valve offering 3 modes of operation: dual flush or start/stop or single flush
- water supply from left/right/back or top
- low noise (group I acc. to German Noise Specification)
- insulated against condensation
- ½" water supply connection including integrated angle valve and push fit flexible hose union
- no tools required for the installation of the inspection shaft incl. protection during construction phase
- for vertical or horizontal use
- flush pipe insulated against condensation
- GROHE Water Saving - Less water, perfect flow
- fixing brackets
- with inlet pipe and connector



## 38 986 000 FLUSHING CISTERN GD 2



### SPARE PARTS, January 2012 – spareParts.validDate.now

- 1: Filling valve (Order-nr. 43991000)
- 1.1: Valve Support (Order-nr. 43995000)
- 1.2: Lever (Order-nr. 43734000)
- 1.2.1: Ball seal dia. 9x6.8 mm (Order-nr. 4377000M)
- 1.3: Valve head (Order-nr. 43536000)
- 1.4: Membrane (Order-nr. 4375800M)
- 1.5: Screw cap (Order-nr. 43735000)
- 1.6: Valve float, 5 pcs. (Order-nr. 4379100M)
- 2: Tube (Order-nr. 42233000)
- 2.1: Seat washer (Order-nr. 0319100M)
- 3: Service valve (Order-nr. 42343000)
- 4: AV1 complete with pipe extension (Order-nr. 42320000)
- 4.1: Extension for overflow pipe (Order-nr. 42313000)
- 4.2: pneumatic hose (Order-nr. 42319000)
- 4.3: Ball seal dia. 9x6.8 mm (Order-nr. 42310000)
- 5: Valve seat for flushing cistern Italy (Order-nr. 42316000)
- 6: WC inlet and outlet connecting set (Order-nr. 37311K00)
- 6.1: Basin fastening (Order-nr. 43511SH0)
- 6.2: Connector (Order-nr. 37119000)